

HydraMax[®]

Product Installation Guide

1 Bucket System



HydraMax 1-Bucket

System at a Glance

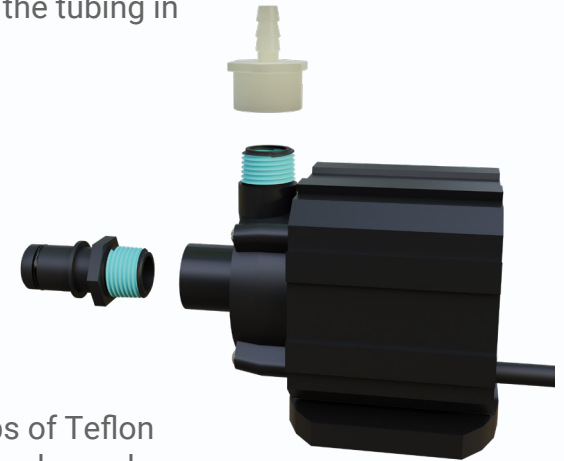


HydraMax 1-Bucket

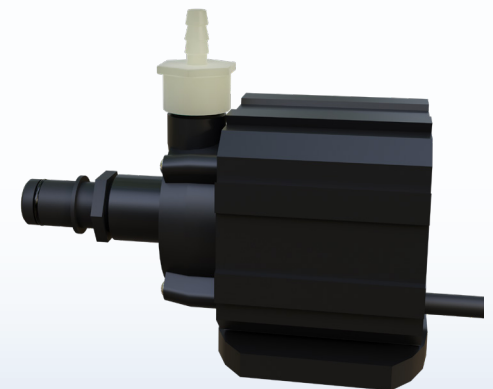
Pump Assembly



Start by applying Teflon tape to the pump adapters, then assemble the parts as illustrated. Before pushing the tubing over the barbs of the pump and circulator, place spring clamps on both ends of the tubing. Finally, slide the spring clamps over the barbs to secure the tubing in place.



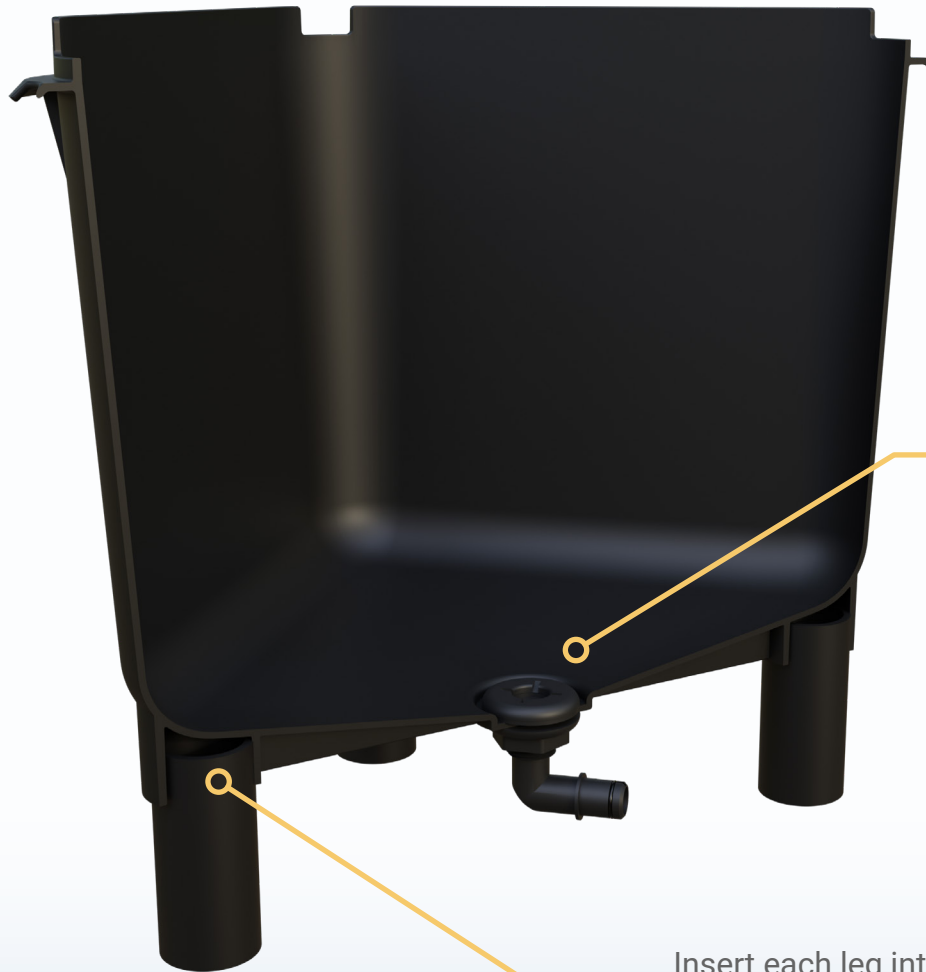
Apply 2-3 wraps of Teflon tape to the threads as shown.



Tighten the adapter to the pump until they are snug. Do not over-tighten.

HydraMax 1-Bucket

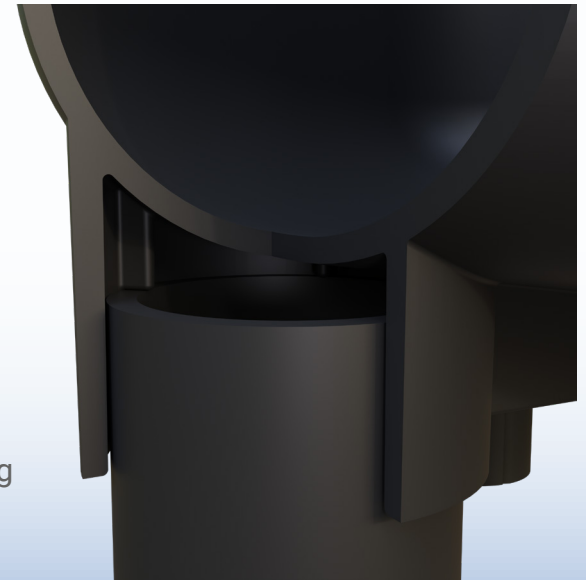
Bucket Assembly



Insert the drain fitting with gasket from inside the bucket and tighten the nut below.

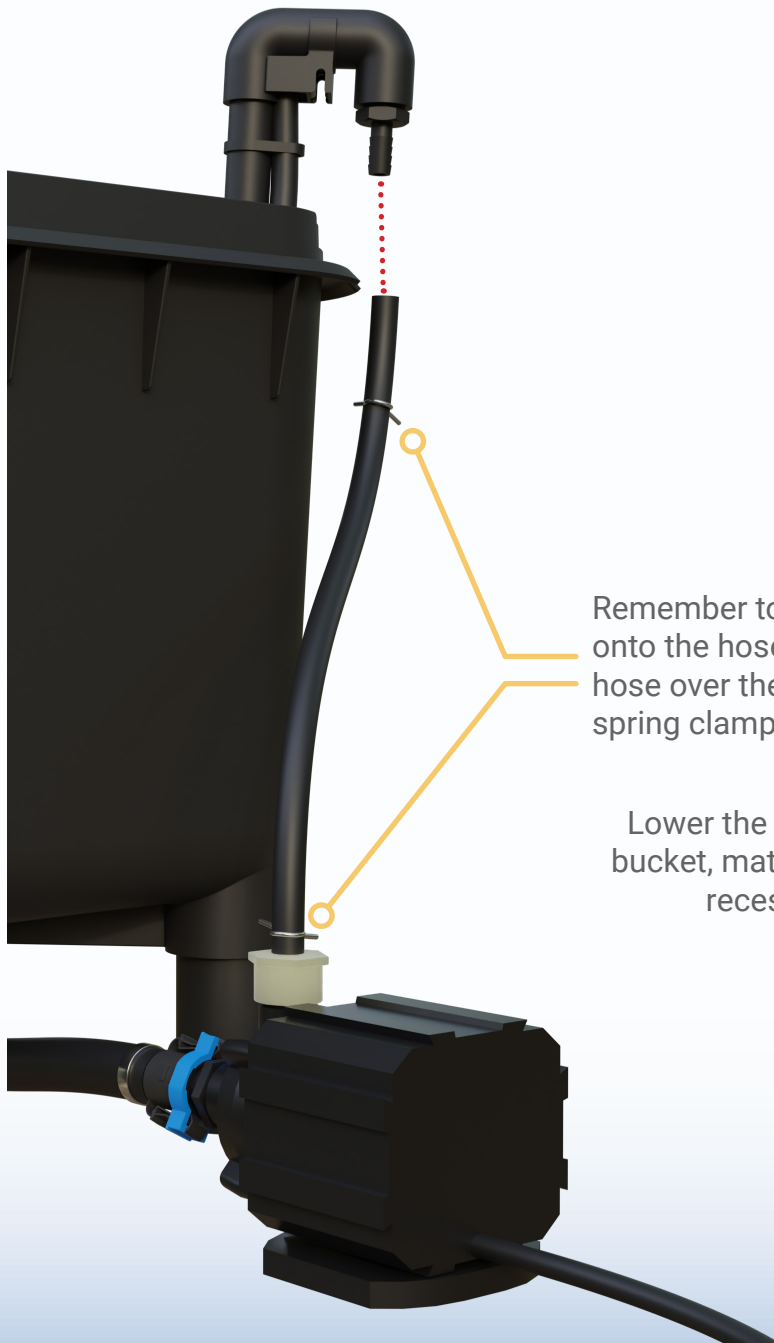


Insert each leg into the bucket and then press or tap the bucket onto a level surface to ensure that each leg is fully seated.



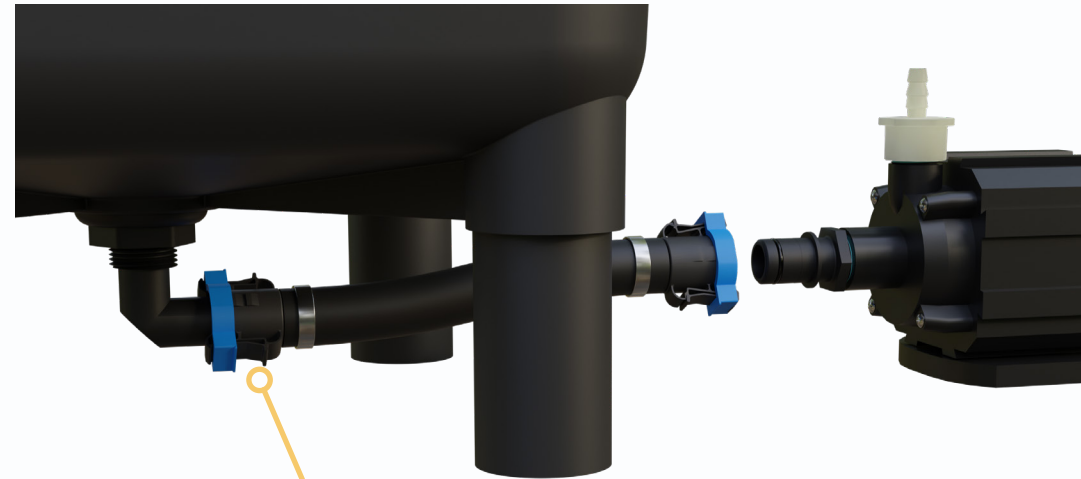
HydraMax 1-Bucket

Final Assembly

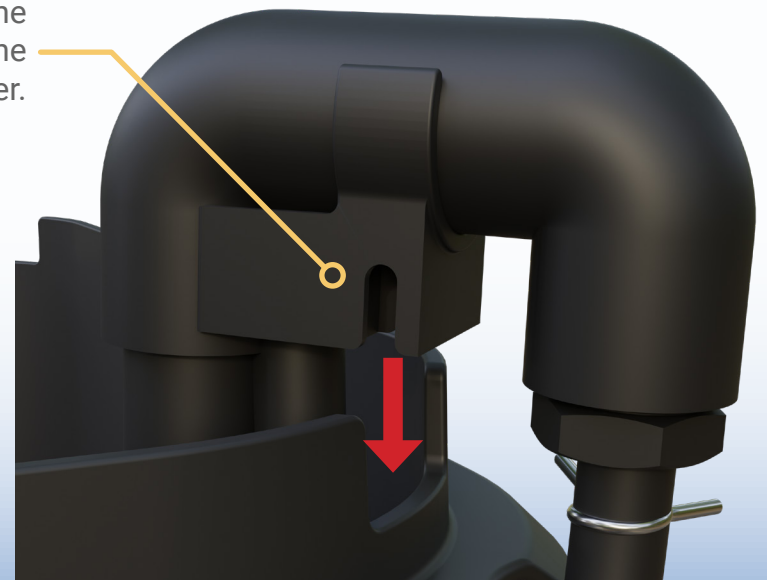


Remember to slide a spring clamp onto the hose before pushing the hose over the barb. Then, slide the spring clamp over the barb.

Lower the circulator into the the bucket, mating the bracket to the recessed lip in the corner.

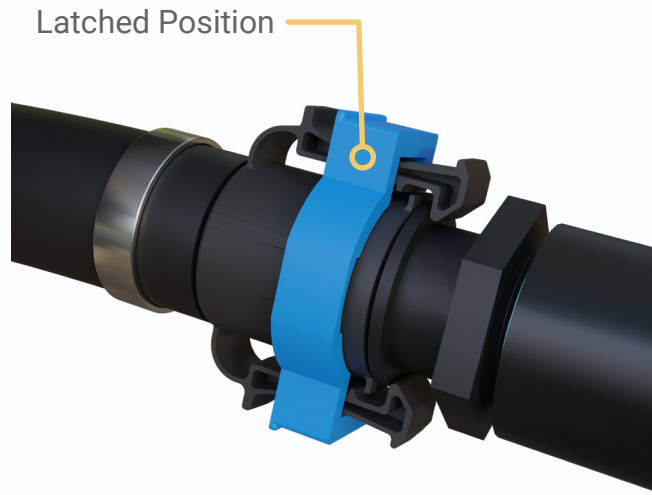


Attach the Qwik-Lok hose to the drain fitting and slide the locking ring into the locked position. Attach the other end of the hose to the pump as shown.

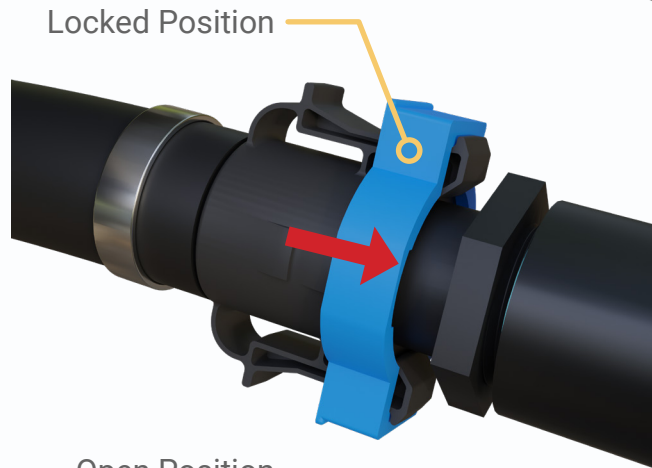


HydraMax 1-Bucket

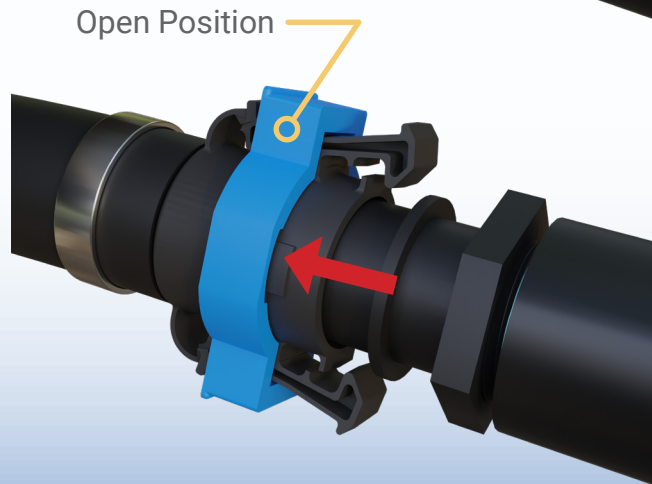
Qwik-Lok Operation



To connect a Qwik-Lok hose, with the blue ring in the “latched” position, simply push the hose onto the fitting.



Once connected, slide the blue ring to the “locked” position.



To disconnect, hold the blue ring with two fingers and pull the hose off of the fitting in one motion.